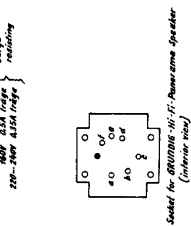
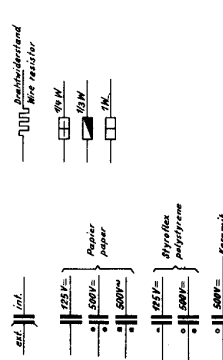
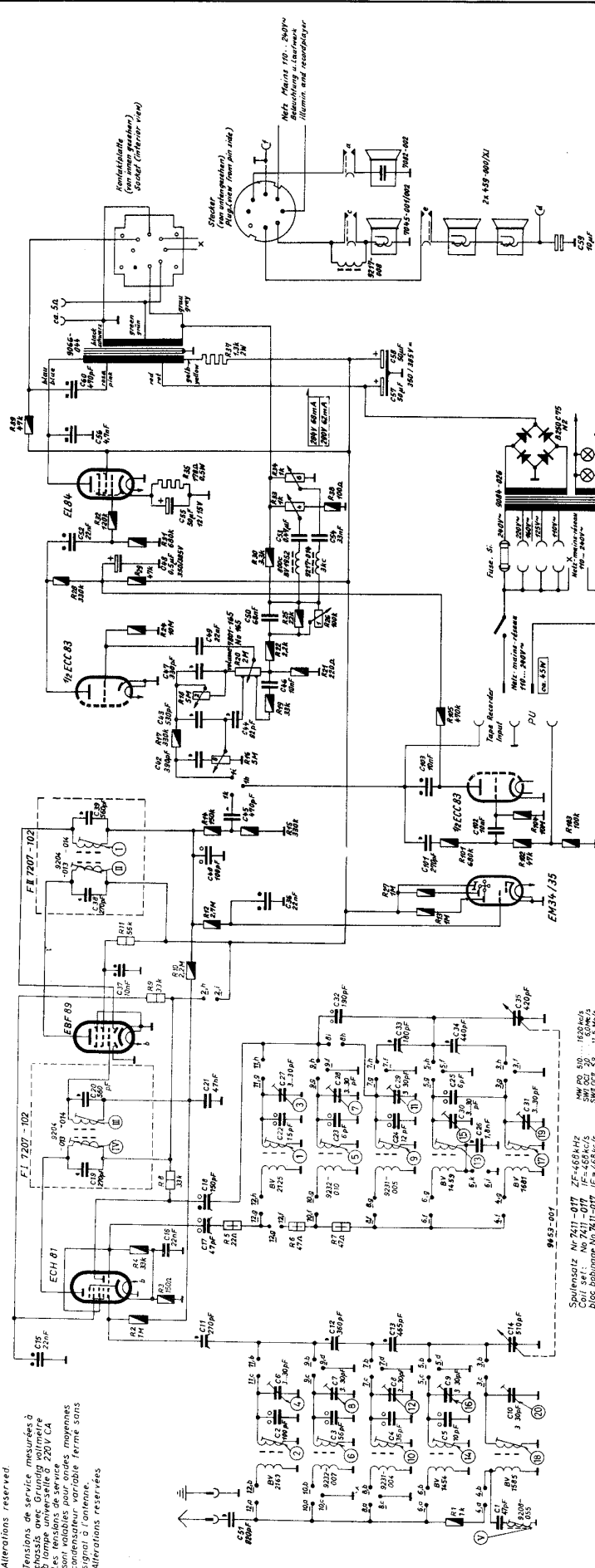
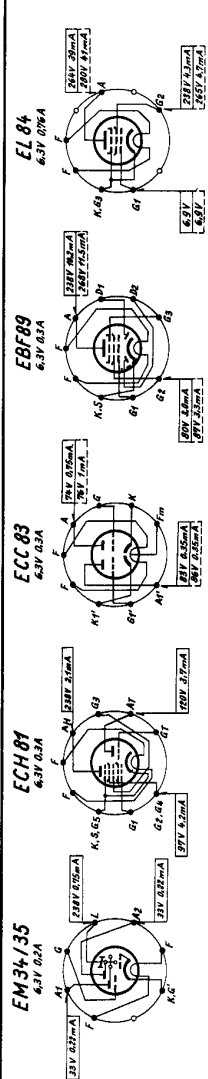


Spannungen mit Grundig-Röhren-Maßstab bei 220V gegen Meßwertfelle gelten für Mittelwelle. Drehkondensator eingedreht ohne Signal an der Antenne. Änderungen vorbehalten.

Tensions de service mesurées à l'aide des tubes Grundig sur châssis avec Grundig-volant à lampe universelle à 220V CA. Les tensions indiquées pour la moyenne sont valables pour les moyennes condensateurs réglés sans signal à l'antenne. Altérations réservées.

Voltages measured to chassis with Grundig VTM at 220V AC. Voltages indicated for medium waves, tuning condensator turned in without signal on aerial. Alterations reserved.



GRUNDIG WERKE FURTH (BAY)
„Modell 7050 WE“

51.1.	2, 3, 4, 5, 6, 7, 8, 9, 10, 11, 12, 13, 14, 15, 16, 17, 18, 19, 20, 21, 22, 23, 24, 25, 26, 27, 28, 29, 30, 31, 32, 33, 34, 35, 36, 37, 38, 39, 40, 41, 42, 43, 44, 45, 46, 47, 48, 49, 50, 51, 52, 53, 54, 55, 56, 57, 58, 59, 60, 61, 62, 63, 64, 65, 66, 67, 68, 69, 70, 71, 72, 73, 74, 75, 76, 77, 78, 79, 80, 81, 82, 83, 84, 85, 86, 87, 88, 89, 90, 91, 92, 93, 94, 95, 96, 97, 98, 99, 100
R:	1, 2, 3, 4, 5, 6, 7, 8, 9, 10, 11, 12, 13, 14, 15, 16, 17, 18, 19, 20, 21, 22, 23, 24, 25, 26, 27, 28, 29, 30, 31, 32, 33, 34, 35, 36, 37, 38, 39, 40, 41, 42, 43, 44, 45, 46, 47, 48, 49, 50, 51, 52, 53, 54, 55, 56, 57, 58, 59, 60, 61, 62, 63, 64, 65, 66, 67, 68, 69, 70, 71, 72, 73, 74, 75, 76, 77, 78, 79, 80, 81, 82, 83, 84, 85, 86, 87, 88, 89, 90, 91, 92, 93, 94, 95, 96, 97, 98, 99, 100